



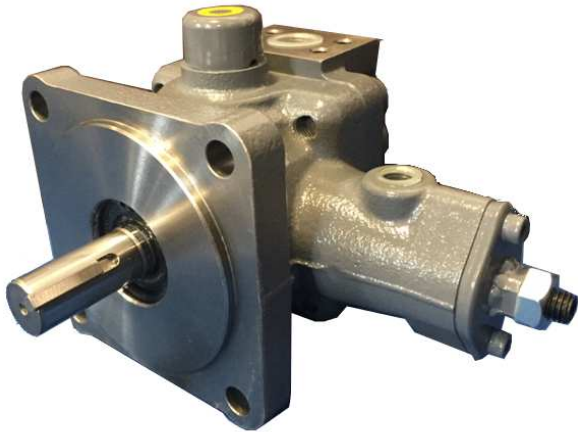
# VV16 Series

**NEW**

**TOKYO KEIKI**  
www.tokyo-keiki.co.jp

## Variable Displacement Vane Pumps

### Energy Efficient Pump for Small Power Packs & Machine Tooling



#### Low Noise

Pulsation suppressing structure with low operational noise, suited for machine tool application

#### Energy Efficient + Long Life

- Variable displacement structure and original side plate structures with low leak rates contribute to superior energy efficiency.
- Incorporates specialized lead-free bearing with low-friction advantages not only for enhancing energy-efficiency and product life, but also for environmental friendly purposes.

#### Strong Against Contamination

Original side plate made with special abrasion resistant alloy enhances anti-contamination features for long and stable operation.

#### Simplifies Hydraulic Circuits

Eliminates need for relief valves, simplifying the hydraulic circuit.

### MODEL CODE

VV16 - R - A - 20

1	2	3	4
---	---	---	---

1 Variable Displacement Vane Pump  
Max. Displacement: 16 cm<sup>3</sup>/rev (0.97in<sup>3</sup>/rev)

2 Rotation (Viewed from Shaft End)  
R: Right Rotation (Clockwise)

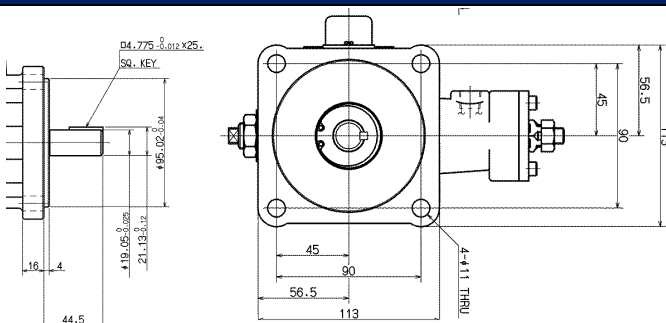
3 Pressure Adjustment Range  
A: ~3.5MPa BL: 3.5~6MPa B: 5~7MPa  
(A: ~507Psi BL: 507~870Psi B: 725~1015 PSI)

4 Design Number

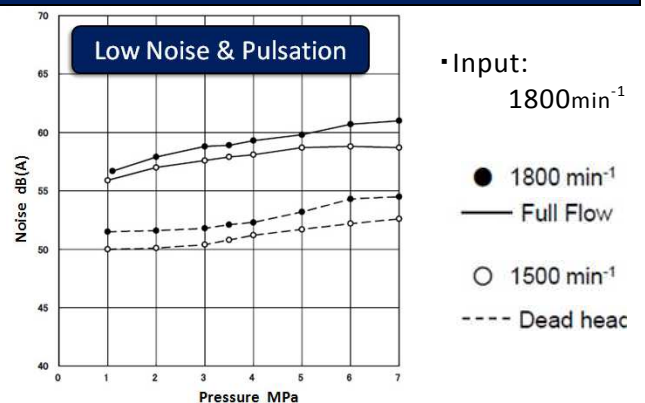
### TECHNICAL DATA

Model Code	Max. Displacement (cm <sup>3</sup> /rev) (in <sup>3</sup> /rev)	Adjustable Pressure Range (MPa / Psi)	Allowable Surge (MPa / Psi)	Max. Speed Max/ Min (min <sup>-1</sup> )	Dry Weight (kg)
VV16-R-A*-10	16 / 0.97	~3.5 / 507	14 / 2030	1800 / 600	9
-BL-		3.5~6.0 / 507~870			
-B -		5.0~7.0 / 725~1015			

### DIMENSIONS



### PERFORMANCE REFERENCE



\* Specifications subject to change without prior notice

For detailed information, please contact Tokyo Keiki Inc. or your local distributor

**TOKYO KEIKI INC.** 2-16-46, Minami-Kamata, Ohta-Ku, Tokyo 144-8551 JAPAN  
Tel: +81 3 3737 8631 | Fax: +81 3 3737 8666 | t-bando@tokyo-keiki.co.jp