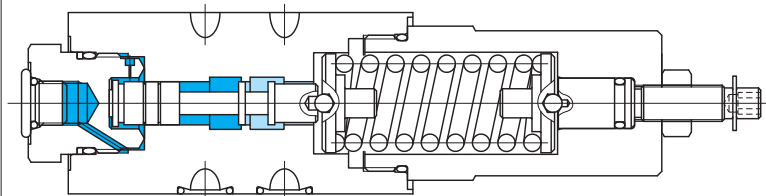
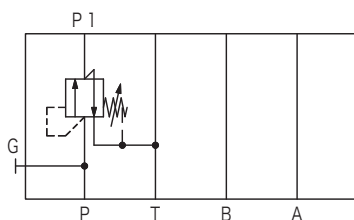


Pressure sequence/counterbalance valves TGMR(1)-3, 50 series

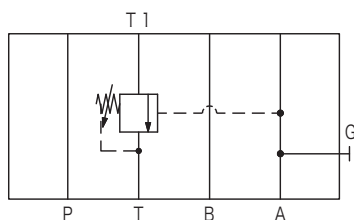


Functional Symbols

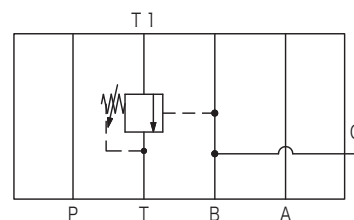
Sequence Valve (TGMR1-3-PP)



Counterbalance Valve (TGMR-3-TA)



Counterbalance Valve (TGMR-3-TB)



Model Code

(F3)-TGMR(1)-3-**-*W-G-50

1 2 3 4 5 6 7 8 9

1 Hydraulic fluid

Omit: mineral oil based fluid, water-glycol based fluid
F3: phosphate ester

2 Pressure control functions

TGMR: counterbalance valve
TGMR1: sequence valve

3 Mounting dimensions

3: ISO 4401-03

4 Control port

P: P port (for TGMR1-3)
T: T port (for TGMR-3)

5 Pilot line

P: P line (for TGMR1-3)
A: A line (for TGMR-3)
B: B line (for TGMR-3)

6 Pressure adjustment range

A: (0.3)~3 MPa
B: (0.35)~7 MPa
C: (1)~14 MPa
F: (2)~25 MPa
(The minimum pressure differs depending on the flow. Refer to the characteristics curves.)

7 Adjuster

W: hex socket adjustment screw
H: knob

8 Piping connection port: for gauge port (G)

G: G1/8 O-ring seal (for all models)

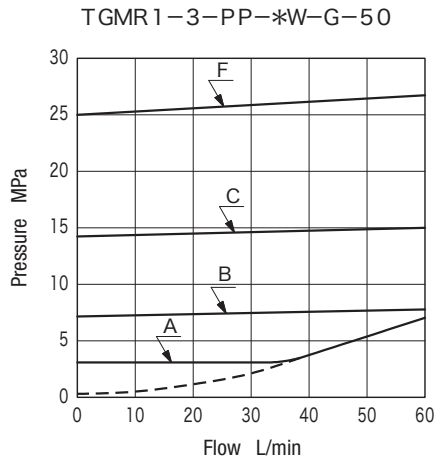
9 Design no.

Specifications

- Max. Working Pressure: 31.5 MPa
- Max. Flow: 60 L/min

Characteristics Curve (at 20 mm²/s, 50°C) (typical examples)

■ Pressure Override Characteristics

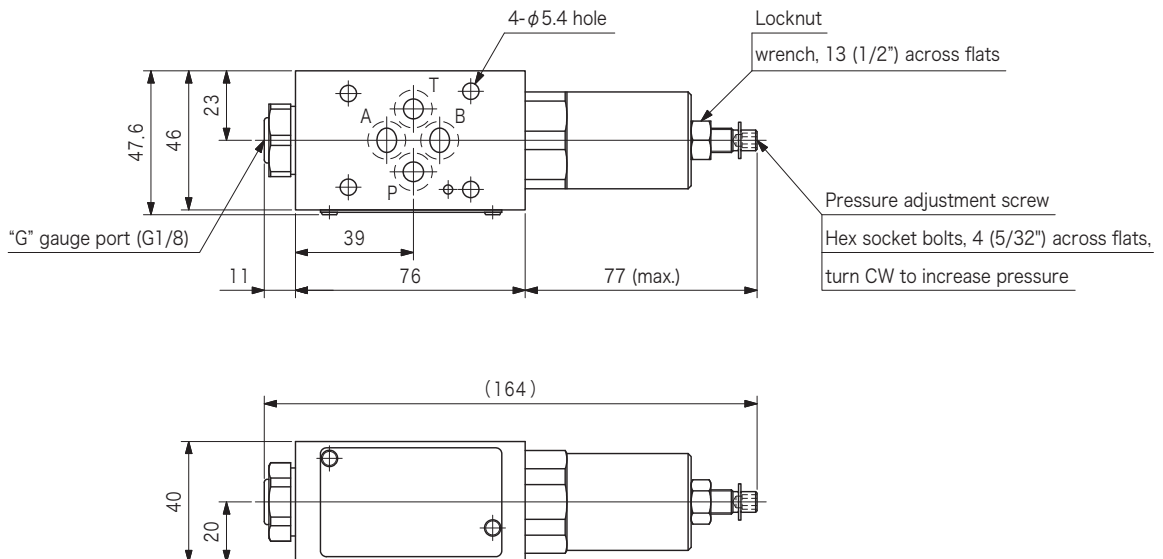


- Example is case where pressure adjustment range is set at maximum.
- Dashed line represents minimum pressure characteristics (set at 0.3 MPa).
- For characteristics of system, tank back pressure is added to these values.

Dimensions

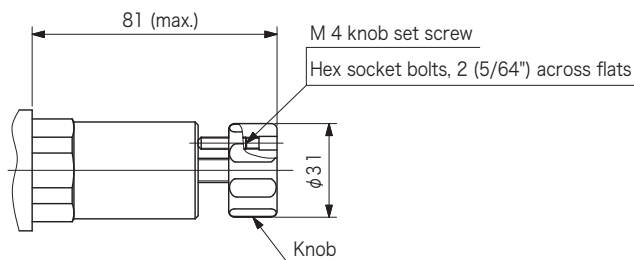
TGMR1-3-PP-*W-G-50 (sequence valve) Weight: 1.3 kg

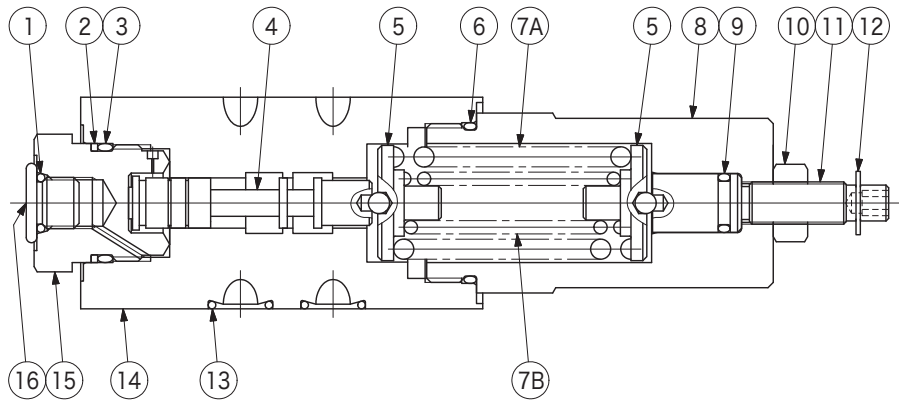
TGMR-3-T*-*W-G-50 (counterbalance valve)



Pressure Adjuster (Option)

"H" Type Weight: +0.1 kg (compared to W type)





No.	Name	Part No.	Standard	Qty
1	O-ring	008000619	JIS B 2401-1B-P8	1
2	Backup ring	40025078	—————	1
3	O-ring	007901817	AS568-018 (NBR, Hs70)	1
6	O-ring	007902319	AS568-023 (NBR, Hs90)	1
9	O-ring	007901119	AS568-011 (NBR, Hs90)	1
13	O-ring	007901219	AS568-012 (NBR, Hs90)	4

Spring

Code	No.	7A	7B
	A	40024925	—————
B	40024926	—————	—————
C	40024927	—————	—————
F	40024928	40025084	—————