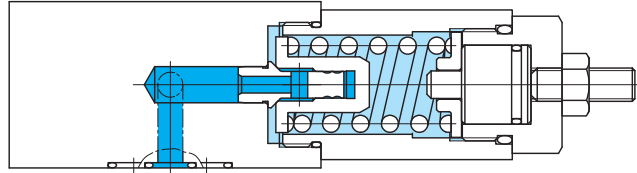
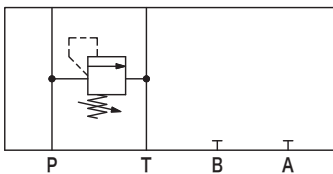


# Direct pressure relief valves TGMC(2)-3

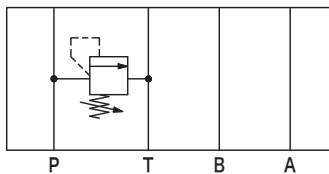


## Functional Symbols

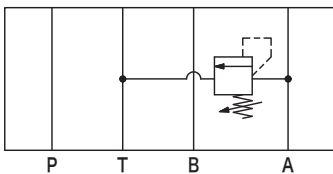
TGMC-3-PT



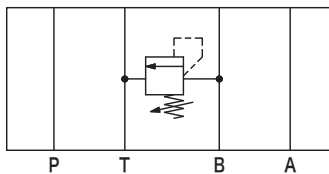
TGMC-3-PT-S1



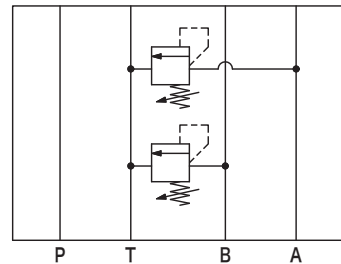
TGMC-3-A T



TGMC-3-B T



TGMC2-3-AT-BT



## Model Code

**(F3)-TGMC(2)-3-\*\*-\*W-(BT-\*W)-10-(S1)**

1 2 3 4 5 6 7 8 9 10 11

**1** Hydraulic fluid

Omit: mineral oil based fluid, water-glycol based fluid  
F3: phosphate ester

**2** Relief function

TGMC: single relief valve  
TGMC2: double relief valve

**3** Mounting dimensions

3: ISO 4401-03

**4** Control line

PT: P → T relief (single relief valve only)  
AT: A → T relief  
BT: B → T relief (single relief valve only)

**5** Max. adjustable pressure

B: 7 MPa  
C: 14 MPa  
F: 21 MPa

(See "Characteristics Curve" for minimum pressure.)

**6** Adjuster

W: hex socket adjustment screw  
K: micrometer knob

**7** Control line (for TGMC2)

BT: B → T relief (double relief valve only)

**8** Max. adjustable pressure

See **5**.

**9** Adjuster

See **6**.

**10** Design no.

**11** Special feature

S1: A, B lines penetrated (for TGMC-3-PT only, see "Functional Symbols".)

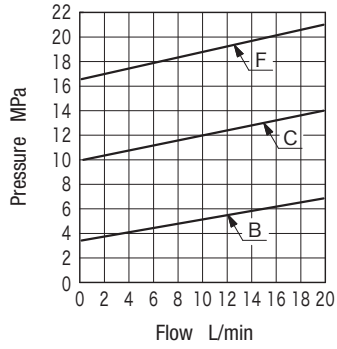
} for TGMC2

## Specifications

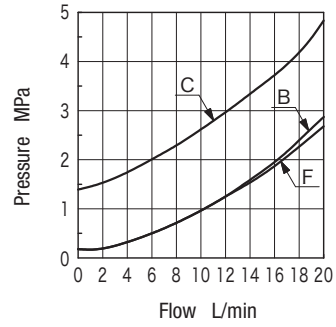
Model Code	Max. Working Pressure MPa	Max. Flow L/min	Max. Adjustable Pressure MPa		Weight kg			
			Code		TGMC-3		TGMC2-3	
					W Type	K Type	W Type	K Type
TGMC (2) -3	21	20	B	7	1.3	1.4	1.6	1.8
			C	14				
			F	21				

# Characteristics Curve (at 20 mm<sup>2</sup>/s, 50°C) (typical examples)

## ■ Pressure Override Characteristics

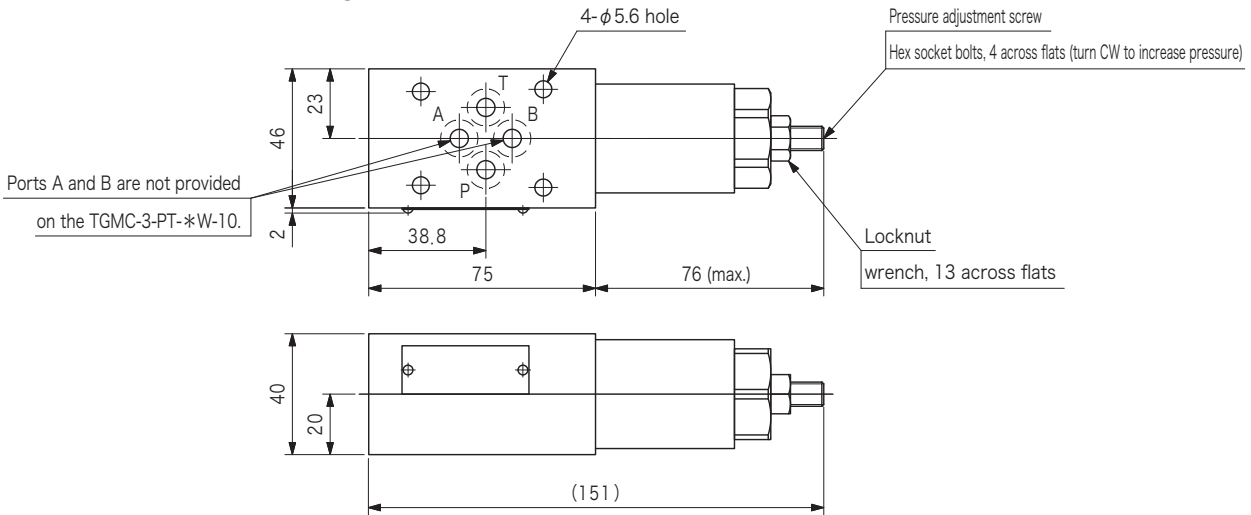


## ■ Minimum Pressure Characteristics (typical example)

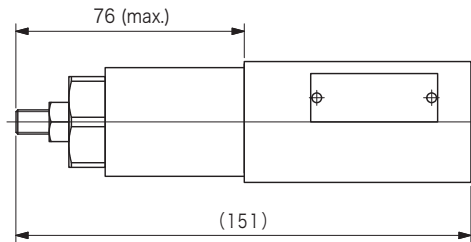


## Dimensions

TGMC-3-PT-\*W-10 (single relief valve) Weight: 1.3 kg  
 TGMC-3-PT-\*W-10-S1 (single relief valve)  
 TGMC-3-BT-\*W-10 (single relief valve)

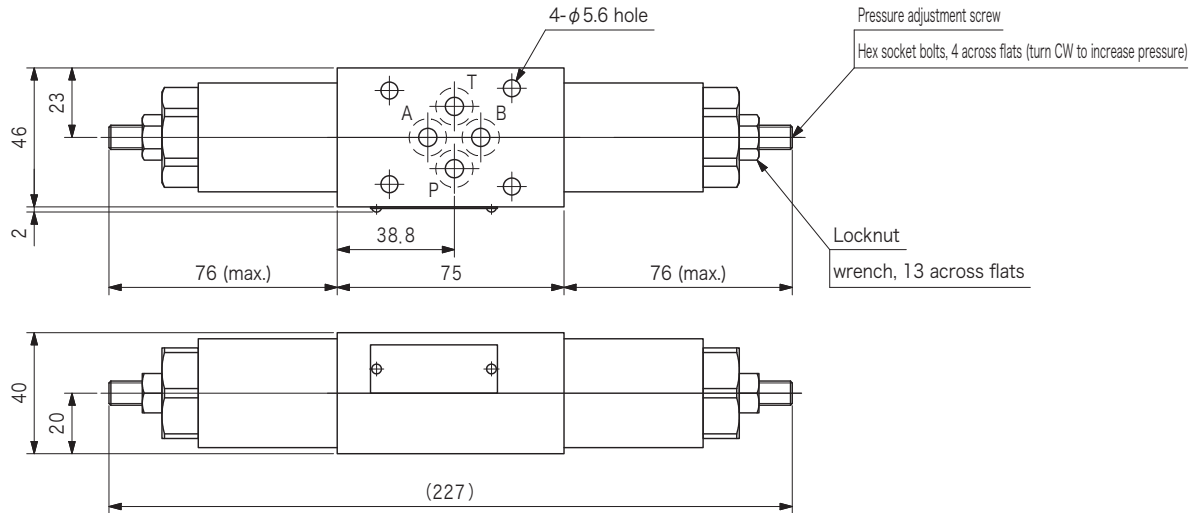


TGMC-3-AT-\*W-10 (single relief valve) Weight: 1.3 kg



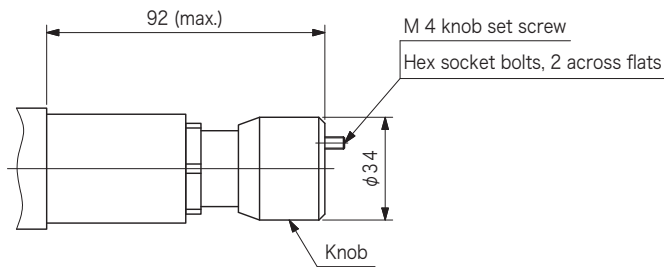
## Dimensions

TGMC2-3-AT-\*W-BT-\*W-10 (double relief valve) Weight: 1.6 kg

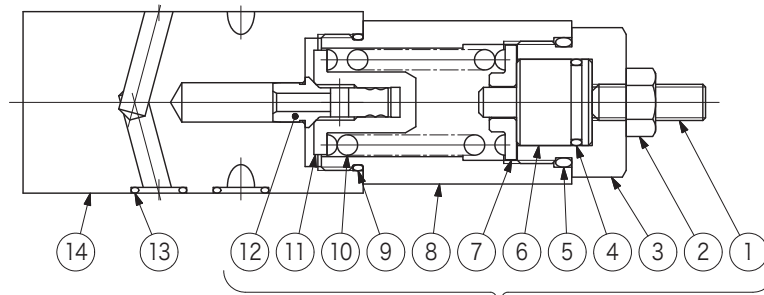


## Pressure Adjuster (Option)

"K" Type Weight: +0.1 kg (compared to W type)



## Construction



For TGMC2-3, two sets of this part (① to ⑫) are used.

### O-ring

No.	Name	Part No.	Standard	Qty	
				TGMC-3	TGMC2-3
4	O-ring	007901617	AS568-016 (NBR, Hs70)	1	2
5	O-ring	007911917	AS568-119 (NBR, Hs70)	1	2
9	O-ring	007902317	AS568-023 (NBR, Hs70)	1	2
13	O-ring	007901219	AS568-012 (NBR, Hs90)	4	4