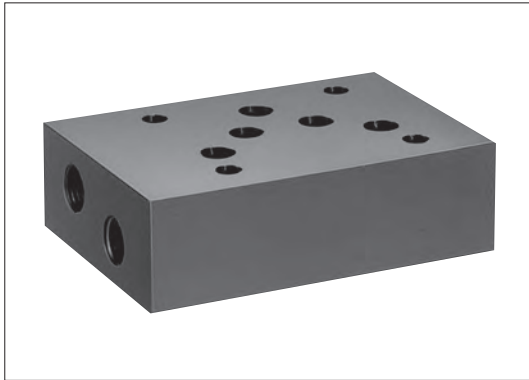


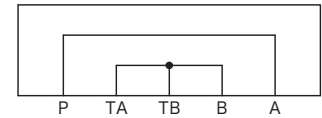
# Adaptor plates TGMA-5



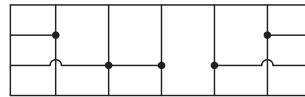
## Functional Symbols



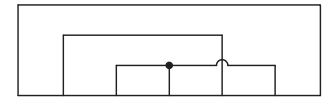
TGMA-5-B



TGMA-5-C1



TGMA-5-T



TGMA-5-C2

## Model Code

### (F3)-TGMA-5-B-20-(B)

1 2 3 4 5 6

#### 1 Hydraulic fluid

Omit: mineral oil based fluid, water-glycol based fluid  
F3: phosphate ester

#### 2 Adaptor plate

#### 3 Mounting dimensions

5: ISO 4401-05

#### 4 Adaptor plate

B: blanking plate

C1: crossover plate (P → A, B → T)

C2: crossover plate (P → B, A → T)

T: tapping (gauge port) plate (P, A, B, T port)

#### 5 Design no.

#### 6 Pipe connection (for tapping plate)

B: G1/4 (bonded seal)

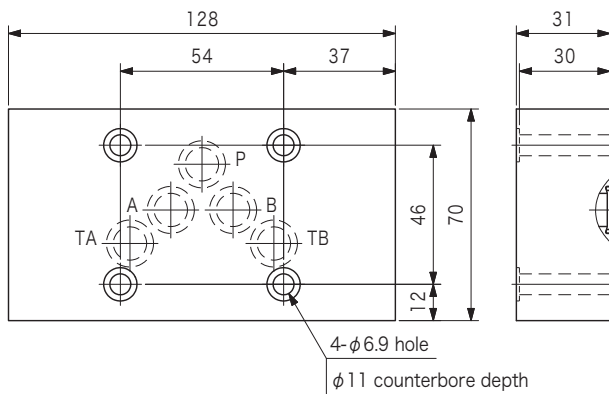
T: Rc 1/4 (however max. working pressure, 21 MPa)

## Specifications

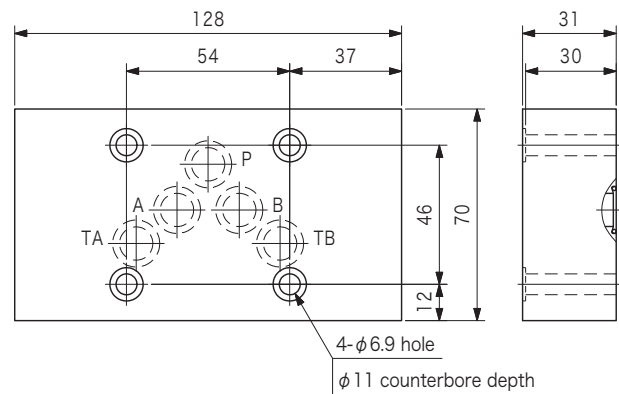
Model Code	Max. Working Pressure MPa	Weight kg
TGMA-5-B-20	31.5	2.0
TGMA-5-C1-20		
TGMA-5-C2-20		
TGMA-5-T-20-B/T	31.5/21	

## Dimensions

### TGMA-5-B-20



### TGMA-5-C1/C2-20



### TGMA-5-T-20-B/T

