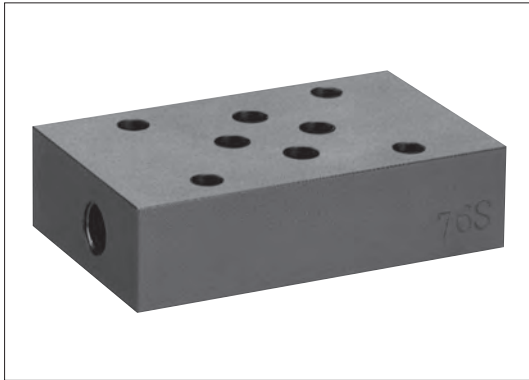
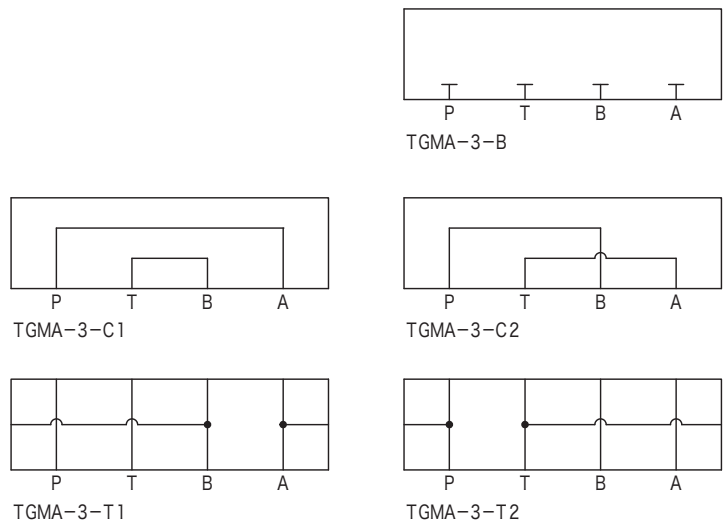


# Adaptor plates TGMA-3



## Functional Symbols



## Model Code

(F3)-TGMA-3-T1-20-(B)

1 2 3 4 5 6

- 1 Hydraulic fluid  
Omit: mineral oil based fluid, water-glycol based fluid  
F3: phosphate ester
- 2 Adaptor plate (max. working pressure, 31.5 MPa)
- 3 Mounting dimensions  
3: ISO 4401-03
- 4 Adaptor plate  
B: blanking  
C1: crossover plate (P → A, B → T)  
C2: crossover plate (P → B, A → T)  
T1: tapping (gauge port) plate (A, B line)  
T2: tapping (gauge port) plate (P, T line)

- 5 Design no.
- 6 Pipe connection (for tapping plate)  
B: G1/8 (bonded seal)  
T: Rc1/8 (however max. working pressure, 21 MPa)

## Specifications

Model Code	Max. Working Pressure MPa	Weight kg
TGMA-3-B TGMA-3-C1 TGMA-3-C2	31.5	0.5
TGMA-3-T1-20-B/T TGMA-3-T2-20-B/T	31.5/21	

## Dimensions

