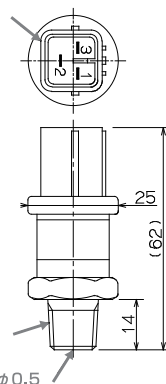


# Electronic Pressure Sensor

## ETXP Series

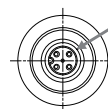


Electrical Connection Type  
(Refer to Standard Chart)  
HW090 (Sumitomo Denso)



Joint Bolt  
(Refer to Standard Chart)

Throttle Valve  $\phi 0.5$



Electric Connection Type  
(Refer to Standard Chart)  
M12 (4 Pole)

Joint Bolt  
(Refer to Standard Chart)

Throttle Valve  $\phi 0.5$

### FEATURES

Wide Compensated Temperature Range :  $-40^{\circ}\text{C} \sim 125^{\circ}\text{C}$

Compact and Light Weight : Total Length : 58 ~ 62mm, Weight : Approx. 50g

High General Accuracy :  $\pm 2.0\%$  F.S. (Within Compensated Temperature Range)

### TECHNICAL SPECIFICATIONS

ITEM	SPECIFICATION
Rated Pressure Range	1, 10, 20, 35, 50 [MPa]
Output	• DC0 ~ 10 [V] • DC1 ~ 5 [V] • DC4 ~ 20 [mA]
Power Voltage	• DC9 ~ 30 [V] • DC14 ~ 30 [V] ( 0 ~ 10 [V] Output )
General Accuracy	$\pm 2.0\%$ F.S. ( Within Temperature Compensating Range )
Compensated Temperature Range	$-40 \sim 125^{\circ}\text{C}$
Ambient Temperature	$-40 \sim 125^{\circ}\text{C}$ ( no condensation )
Impact Resistance	1,000m / s <sup>2</sup> ( 6ms or less, X.Y.Z each direction 3 times, Normal Temperature )
Vibration Resistance	200m / s <sup>2</sup> ( 10 ~ 2,000Hz, X:4, h, Y:2h, Z:2h, Normal Temperature )
Cycle Durability	Over 10 Million cycles ( 10 ~ 100% F.S. , Repeated Pressure )
IP Standard	IP67 (Connector Jointed)
Secular Change	$\pm 0.1\%$ F.S. or less
Electrical Connection Type	• Sumitomo Denso connector HW090 • M12 (4 Pole) connector
Screw Fitting	• R1 / 4 • G3 / 8A • G1 / 4A DIN 3852 Form A • G1 / 4A DIN 3852 Form E

● Lot Manufacturing Available