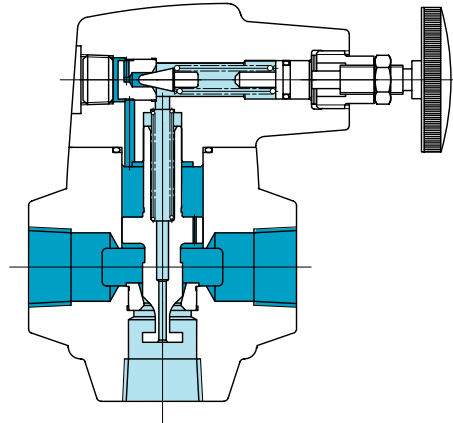


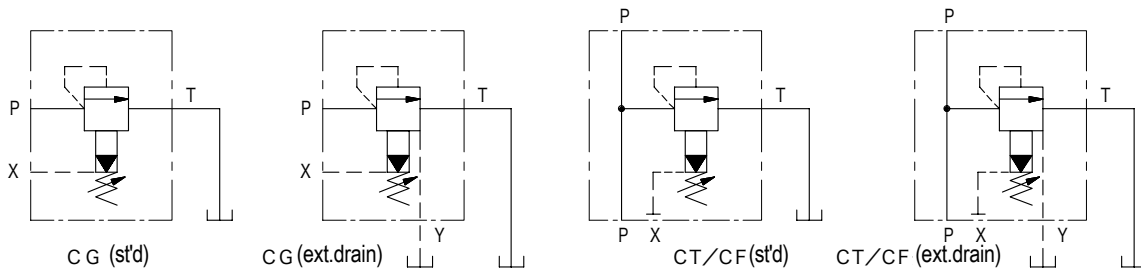
Relief valves CG,CT,CF

C18

PRESSURE CONTROL VALVES



Functional Symbols



Model Code

(F3) - CG-03 - B(V) (Y)-15 - (S81)- JA - J (except for CT-03)

1 2 3 4 5 6 7 8 9

(F3) - CG-03 - B(V) (Y) - JA - 10 - (S81) - J (for CT-03)

1 2 3 4 5 6 7 8

- | | |
|---|--|
| <p>1 Fluid
Omit for mineral oil, water-glycol
F3: phosphate ester</p> <p>2 Relief valve
CG: gasket mount
CT: thread connection
CF: flange connection</p> <p>3 Size
See 'Specifications'</p> <p>4 Max. adjustment pressure
See 'Specifications'</p> <p>5 Vent pressure
Omit for low vent pressure (st'd)
V: high vent pressure</p> | <p>6 Drain
Omit for internal drain (st'd)
Y: external drain</p> <p>7 Design no.
10: CT-03,CF-16,CF-24
15: CG-03
20: CT-10
40: CT-06</p> <p>8 Adjuster configuration (for CG/CT-03 only)
Omit for sq. head adj. screw
S81: handwheel
(omit for CT-06/10, CR-16/24, handwheel st'd)</p> <p>9 Control code
'J' except for CG-03 with internal drain</p> |
|---|--|

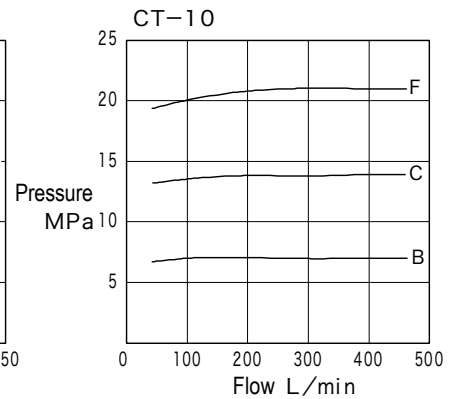
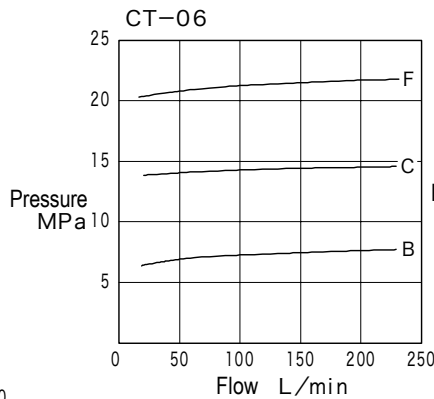
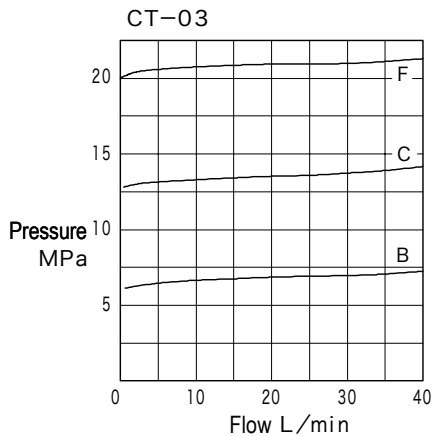
Specifications

Model Code			Size	Max. Wkg. Pressure MPa	Max. Flow L/min	Maximum Adjustable Pressure MPa	Weight kg
Gasket Mount	Threaded Connection	Flange Connection					
CG-03	CT-03	—	03	21	40	B(V) : 7	CG : 3.0 CT : 2.5
—	CT-06	—	06		200	C(V) : 14	2.7
—	CT-10	—	10		400	F(V) : 21	4.6
—	—	CF-16	16		500		17
—	—	CF-24	24		1200		46
—	—	—	—		—		—

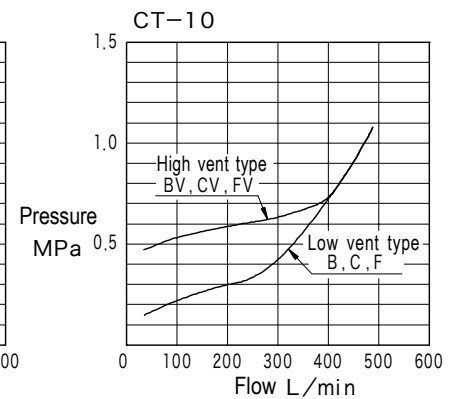
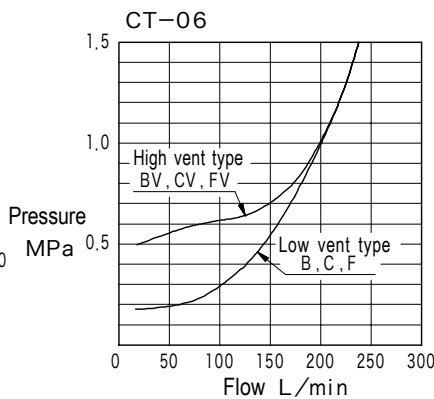
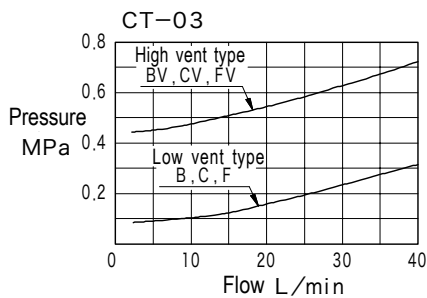
Note: Minimum adjustable pressure may vary with flow. See characteristics curves.

Performance Curves (at 20 mm²/s)

● Flow-Pressure Characteristics



● Flow-Minimum Adjustable Pressure Characteristics



Notes On Use

- When pressure in the tank line is high or when pressure fluctuation is large, use external drain (Y) type valve and pipe drain line directly to tank.
- For faster response from unload to onload, use high vent pressure (V) type.
- Pay attention to flow-pressure characteristics when setting pressure.
- When using as unload valve, refer to flow-minimum adjustment pressure characteristics to select valve size.
- Pressure adjustment handle is not supplied with CG/CT-03. If handle is desired, specify S81 at the end of the model code after the design no.
- Loosen locknut and turn handle to right to increase setting pressure and left to decrease.

Mounting Bolts (JIS B1176, Strength Class 12.9)

Valve Model	Hex. Socket Bolts		Qty
	Metric	Unified	
CG-03	M12 × 55	1/2-13UNC × 57.1	4

- Mounting bolts must be ordered separately.
- Mounting bolts tightening torque: 72~88 Nm

Subplate

Valve Model	Subplate	Connection Port Dia. Rc
CG-03	CGMT-03-10-JA-J	3/8

- Hex socket bolts for valve mounting are provided (unified thread).
- Order subplates separately.
- See page Q3 for details on dimensions.

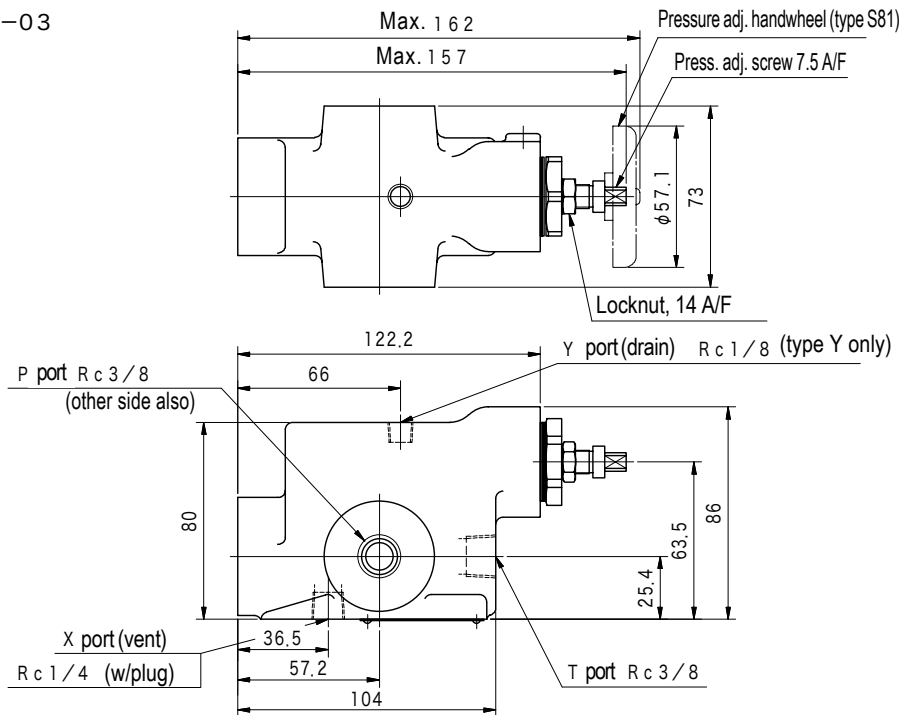
Piping Flange

Valve Model	Flange			
	Connection Port Rc	Threaded	Size	Welded
		Straight Flange		Straight Flange
CF-16	1-1/2	FL-12-PS-20-JA-J	1-1/2	FL-12-TS-20-JA-S18
	2	FL-16-PS-20-JA-J	2	FL-16-TS-20-JA-S18
CF-24	2-1/2	FL-20-PS-20-JA-J	2-1/2	FL-20-TS-20-JA-S18
	3	FL-24-PS-20-JA-J	3	FL-24-TS-20-JA-S18

- Mounting bolts, spring washers, and O-rings.
- Flanges must be ordered separately.
- See page Q14 for dimensions.
- Mounting bolts tightening torque
 - CF-16: 108~132 Nm
 - CF-24: 200~300 Nm

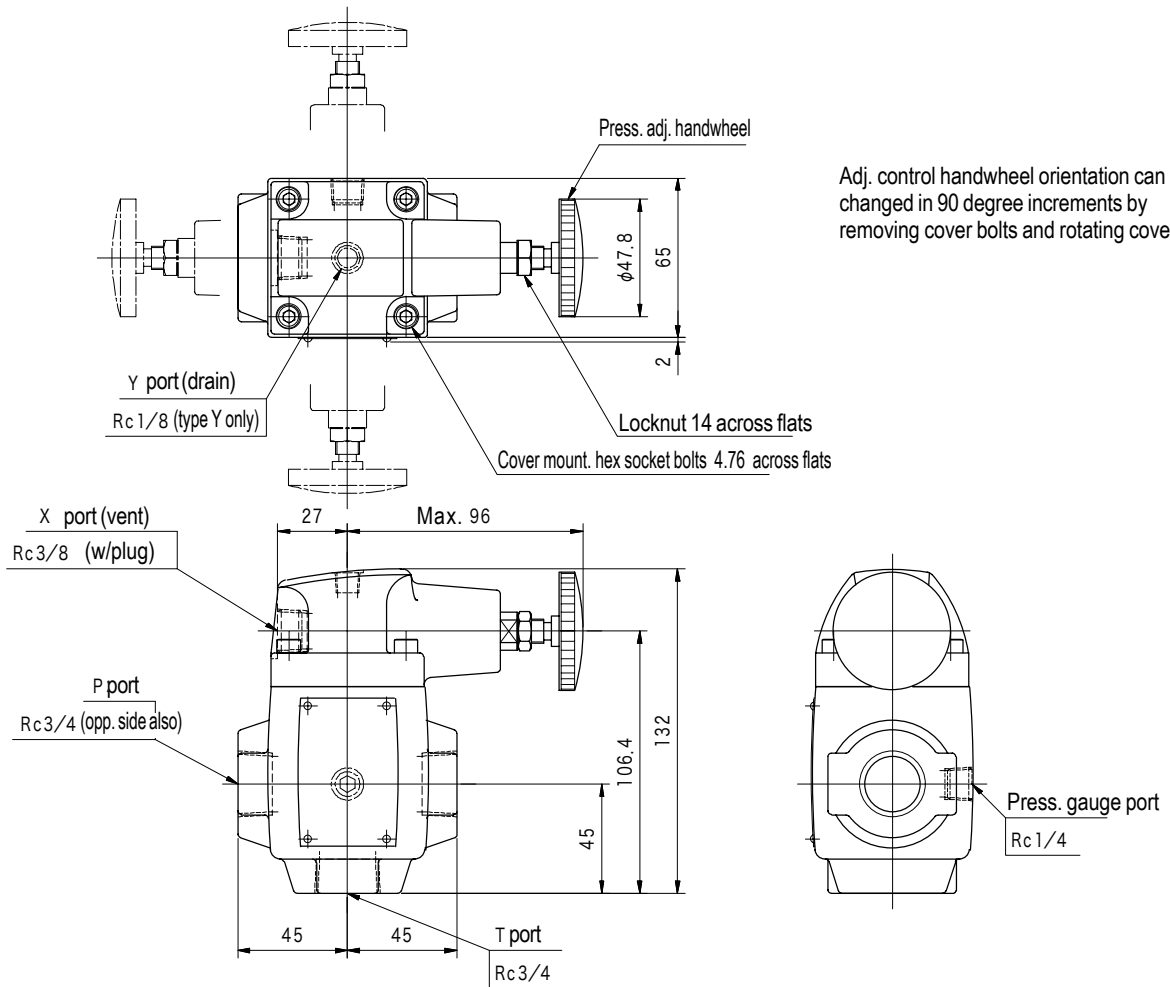
Dimensions

CT-03



Dimensions

CT-06

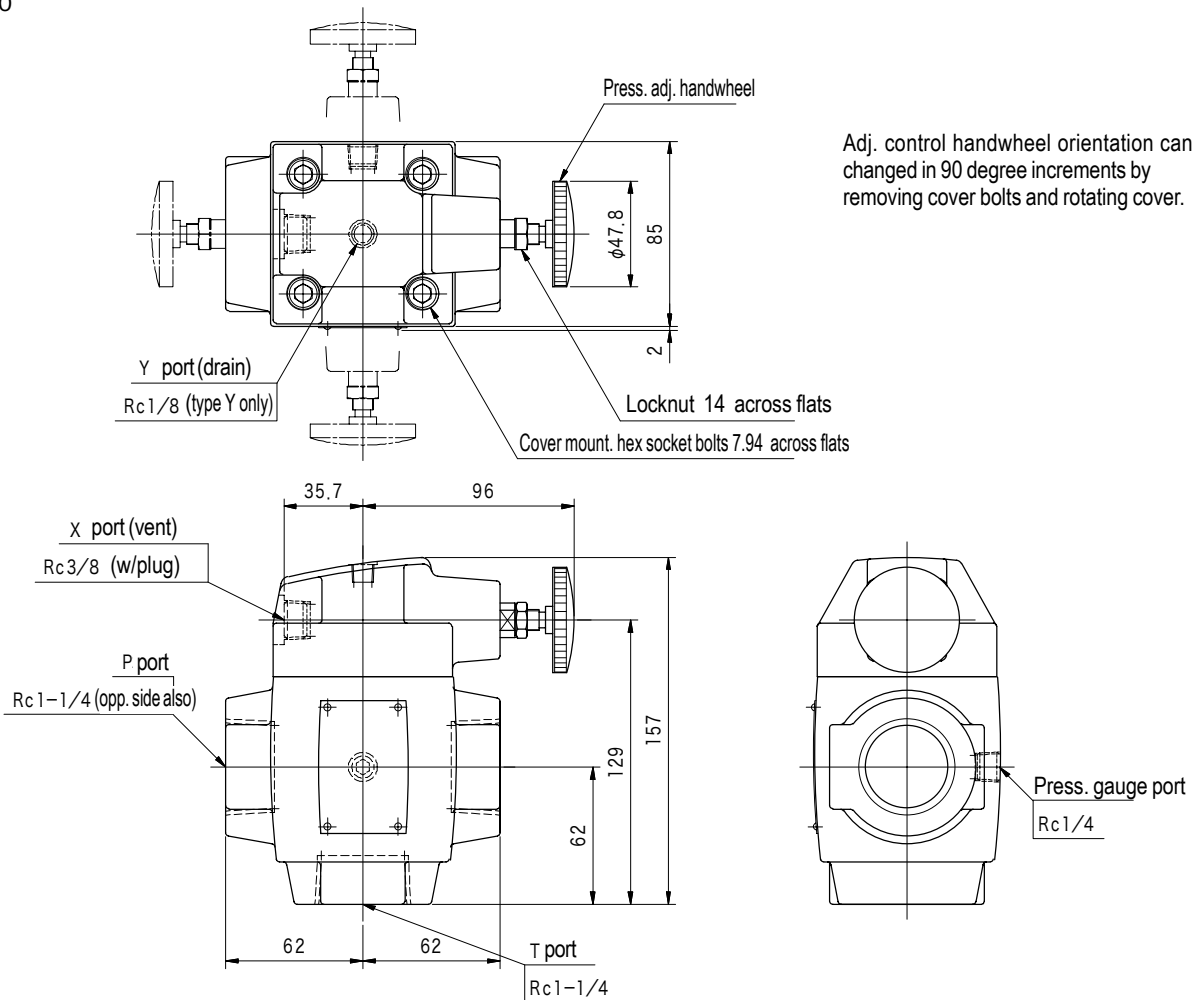


Adj. control handwheel orientation can be changed in 90 degree increments by removing cover bolts and rotating cover.

C
21

PRESSURE CONTROL VALVES

CT-10



Adj. control handwheel orientation can be changed in 90 degree increments by removing cover bolts and rotating cover.