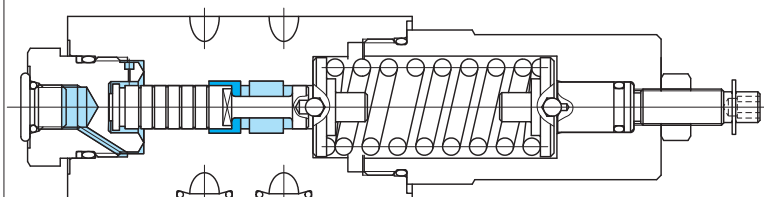
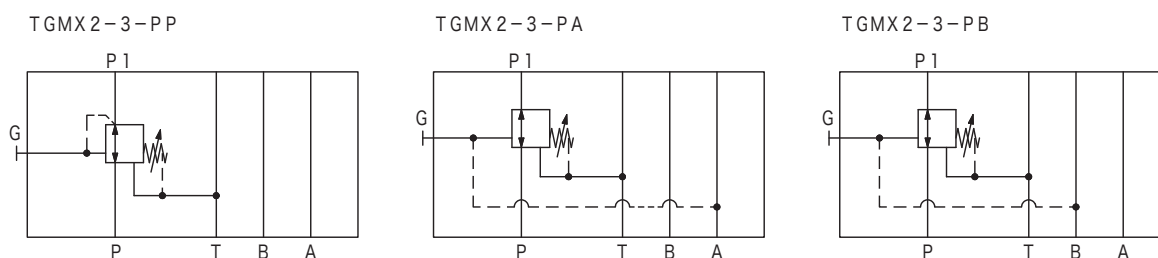


Pressure reducing valves TGMX2-3, 50 series



Functional Symbols



Model Code

(F3)-TGMX2-3-P*(L)-*W-G-50

1 2 3 4 5 6 7 8 9 10

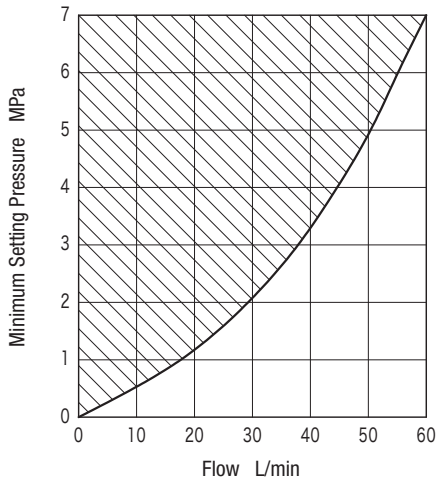
- | | |
|--|---|
| <p>1 Hydraulic fluid
Omit: mineral oil based fluid, water-glycol based fluid
F3: phosphate ester</p> <p>2 Pressure reducing valve</p> <p>3 Mounting dimensions
3: ISO 4401-03</p> <p>4 Control port
P: P port</p> <p>5 Pilot line
P: P line
A: A line
B: B line</p> <p>6 Adjuster position
Omit: B port side
L: A port side (option)</p> | <p>7 Pressure adjustment range
A: (0.3)~3 MPa
B: (0.35)~7 MPa
C: (1)~14 MPa
F: (2)~25 MPa
(The minimum pressure differs depending on the flow. Refer to the characteristics curves.)</p> <p>8 Adjuster
W: hex socket adjustment screw
H: knob</p> <p>9 Piping connection port: for gauge port (G)
G: G1/8 O-ring seal (for all models)</p> <p>10 Design no.</p> |
|--|---|

Specifications

- Max. Working Pressure: 31.5 MPa
- Max. Flow: 60 L/min

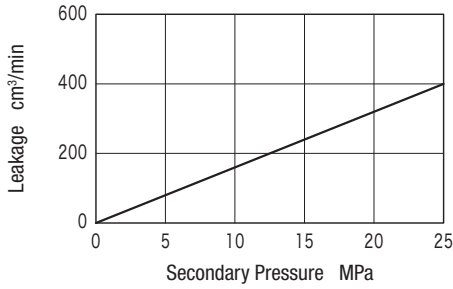
Characteristics Curve (at 20 mm²/s, 50°C) (typical examples)

■ Minimum Setting Pressure



- Indicates min. setting pressure over working flow, regardless of primary pressure.
- Max. flow is restricted for setting pressures below 7 MPa. (use in shade region of graph)

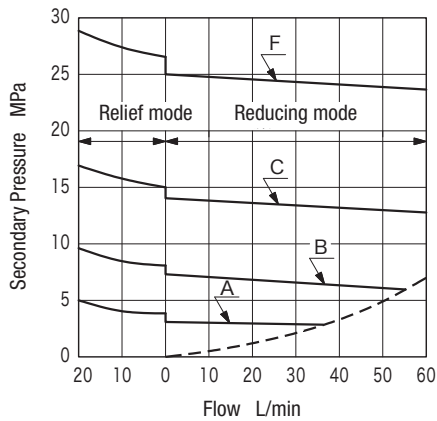
■ Leakage/Secondary Pressure Characteristics



- In order to maintain secondary pressure, flow exceeding leakage is required for the primary side.

■ Pressure Override Characteristics

For TGMX2-3-P*

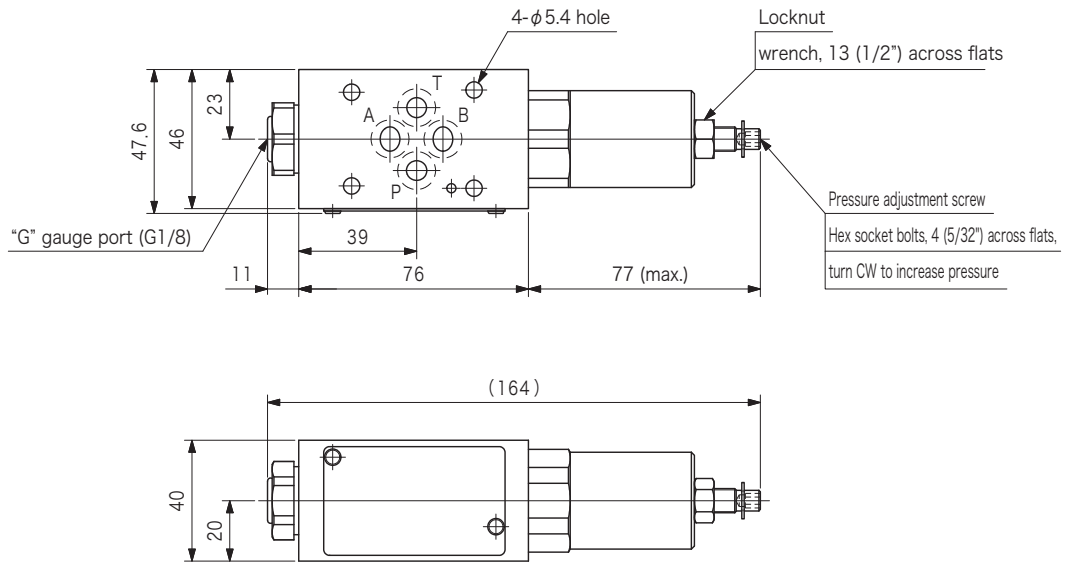


- Example is case where pressure adjustment range is set at maximum.
- If secondary pressure exceeds setting pressure, valve will function in relief mode as shown in the figure.
- For characteristics of system, tank back pressure is added to these values.

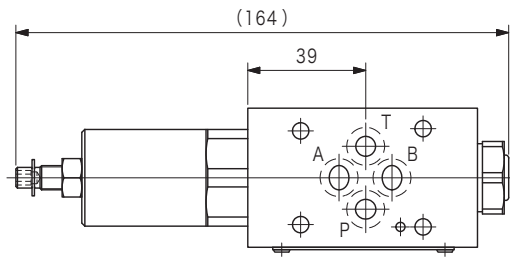
Min. setting pressure curve

Dimensions

TGMX2-3-P*-W-G-50 (reducing valve) Weight: 1.3 kg



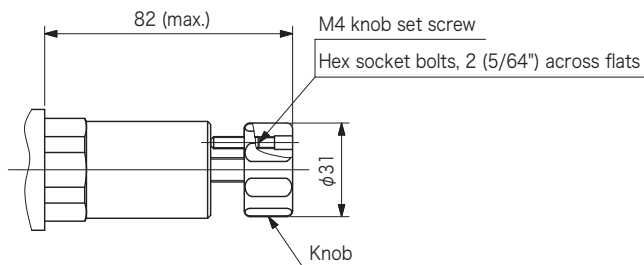
TGMX2-3-P*L-W-G-50 (reducing valve)

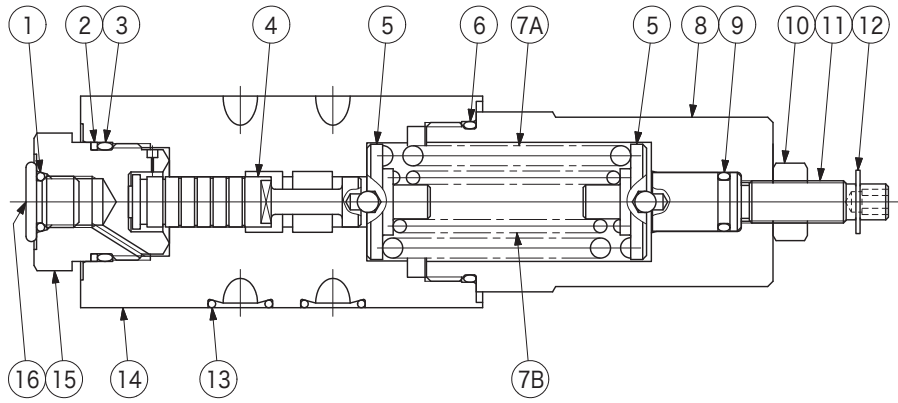


- Compared to standard type, pressure adjuster and gauge port plug positions are reversed. (model "L")

Pressure Adjuster (Option)

"H" Type Weight: +0.1 kg (compared to W type)





No.	Name	Part No.	Standard	Qty
1	O-ring	008000619	JIS B 2401-1B-P8	1
2	Backup ring	40025078	_____	1
3	O-ring	007901817	AS568-018 (NBR, Hs70)	1
6	O-ring	007902319	AS568-023 (NBR, Hs90)	1
9	O-ring	007901119	AS568-011 (NBR, Hs90)	1
13	O-ring	007901219	AS568-012 (NBR, Hs90)	4

Spring

		Spring	
Code	No.	7A	7B
A	40024925	_____	_____
B	40024926	_____	_____
C	40024927	_____	_____
F	40024928	40025084	_____