

Limit and Enclosed Switches

LD Series

Multiple Plunger Limit Switches




FEATURES

- Ideal source of replacement parts for imported machine tools or transplant factories
- Up to 15A capacity
- Variety of switch units
- Roller and chisel plunger are available
- Operating points are precisely factory-adjusted
- Easy mounting and wiring
- NEMA 6, 13 and IEC IP 67 sealing
- Temperature range -10 to +70°C (+14 to +158°F)

One LD series multi-plunger limit switch can replace several individual switches in many machine tooling applications, and on welding and transfer machines in automobile plants.

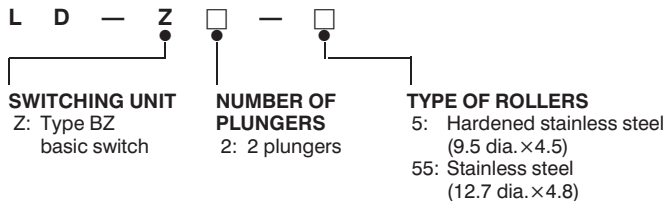
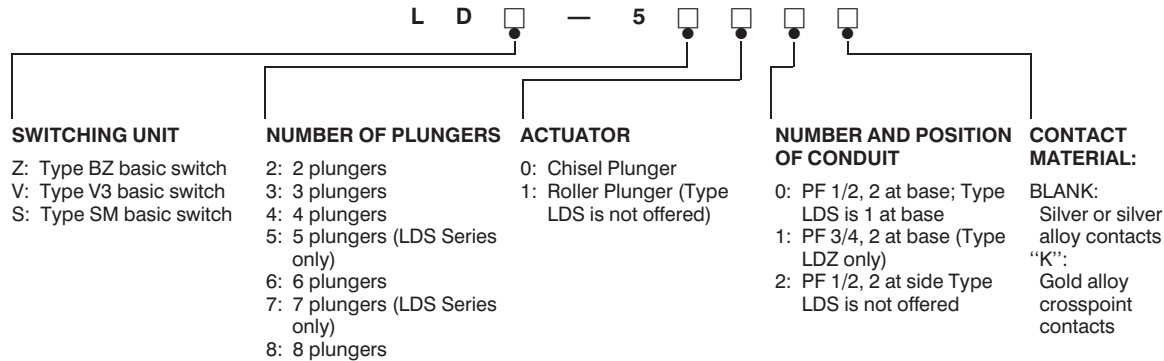
Numerous conduit arrangements are possible, making switch wiring and maintenance simple and inexpensive.

| Catalog Listing | LDS-5000K Series | LDV-5000 Series | LDZ-5000 Series | LD-Z Series | |
|---|---|---|--|--|---------------------------|
| Electrical Specifications  | Max. current at max. voltage ratings 5A at 125, 250VAC K series; 0.1A at 125VAC 0.1A at 30VDC | 10A at 125, 250VAC 0.5A at 125VDC 0.25A at 250VDC | 15A at 125, 250, 480VAC 0.5A at 125VDC 0.25A at 250VDC | 15A at 125, 250, 480VAC 0.5A at 125VDC 0.25A at 250VDC | |
| Single Pole Double Throw | Circuitry | SPDT | SPDT | SPDT | |
| Operating Characteristics | Plunger Number | 2,3,4,5,6,7,8 | 2,3,4,6,8 | 2,3,4,6,8,10,12 | 2 |
| | Pitch | 8 ± 0.15mm | 12 ± 0.2mm | 19 ± 0.2mm | 18 ± 0.25mm |
| | Type | Chisel-shaped | Chisel-shaped roller | Chisel-shaped roller | Roller |
| | O.F. max. – N/lb. | 10/2.2 | 14.74/3.3 | 19.75/4.4 | 14.74/3.3 |
| | P.T. max. – mm/in. | 1.5/0.06 | 1.5/0.06 | 1.5/0.06 | 1.5/0.06 |
| | O.T. min. – mm/in. | 2/0.99 | 3/0.12 | 3/0.12 | 3/0.12 |
| | D.T. – mm/in. | 0.2/0.008 max. | 0.1–0.32 0.004–0.013 | 0.01–0.05 0.0005–0.002 | 0.01–0.05 0.0005–0.002 |

Characteristics: O.F.—Operating Force; P.T.—Pretravel; O.T.—Overtravel; D.T.—Differential Travel; N—Newtons

ORDER GUIDE

(For identification of existing listings only. Not for generating new listings.)



REPLACEMENT SWITCH UNITS

| Switches | Replacement |
|------------------------------|-------------|
| LDS-5000 | AS-J212 |
| LDS-5000K | AS-J212K |
| LDZ-5000 | AS-J209 |
| LDZ-5000K | AS-J209K |
| LDV-5000 | AS-J215 |
| LDV-5000K | AS-J215K |
| REPLACEMENT HEADS – LDZ ONLY | |
| Bevel | 9PA-J68 |
| Roller | 9PA-J67 |

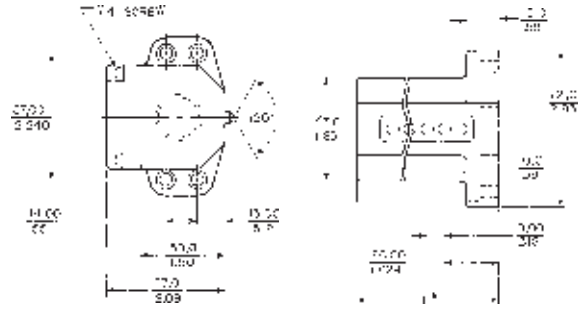
Limit and Enclosed Switches

LD Series

Multiple Plunger Limit Switches

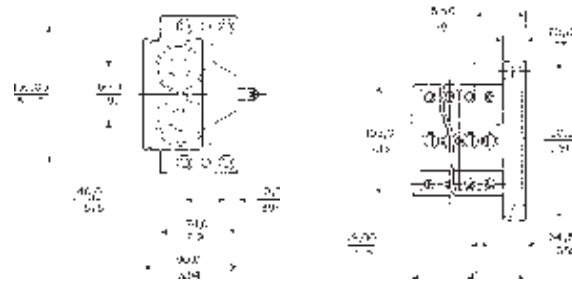
MOUNTING DIMENSIONS $\frac{0.0 \text{ mm}}{0.00 \text{ inches}}$
 (For reference only)

LDS-5000 and LDS-5000K



*NUMBER OF PLUNGERS 2 4 6 8
 DIMENSION "H" 50 mm 66 mm 82 mm 98 mm

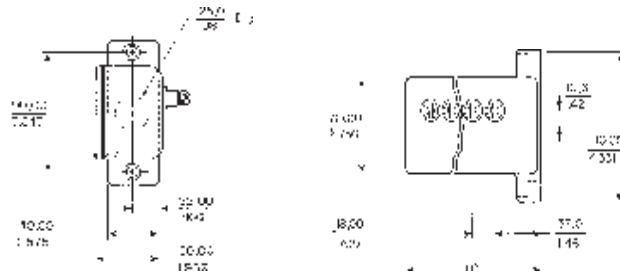
LDZ-5000



*NUMBER OF PLUNGERS 2 4 6 8
 DIMENSION "H" 70 mm 108 mm 146 mm 184 mm

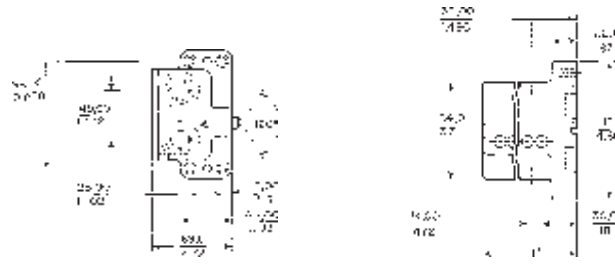
Limit/Enclosed

LD-Z



*NUMBER OF PLUNGERS 2 4 6
 DIMENSION "H" 75 mm 110 mm 145 mm

LDV-5000



*NUMBER OF PLUNGERS 2 3 4 6
 DIMENSION "H" 58 mm 70 mm 82 mm 106 mm