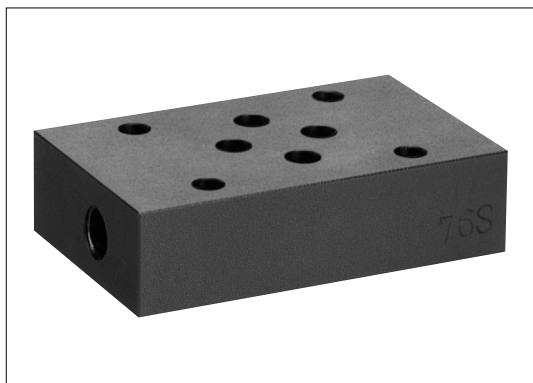
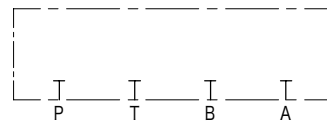


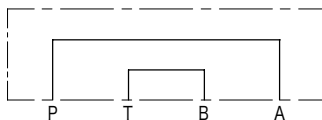
# Auxiliary plates DGMA-3 / TGMA-3



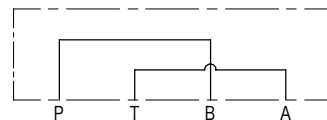
## Functional Symbols



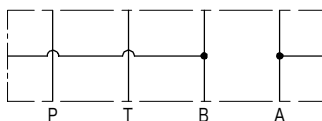
DGMA-3-B, TGMA-3-B



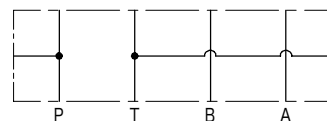
DGMA-3-C1, TGMA-3-C1



DGMA-3-C2, TGMA-3-C2



DGMA-3-T1, TGMA-3-T1



DGMA-3-T2, TGMA-3-T2

## Model Code

**(F3) - DGMA - 3 - T1 - 10 - (T) - JA - (J)**

1 2 3 4 5 6 7

- 1 Fluid  
Omit for mineral oil, water glycol  
F3: phosphate ester
- 2 Adaptor plate (max. working pressure, 25 MPa)
- 3 Mounting  
3: ISO 4401-03
- 4 Adaptor plate  
B: blanking  
C1: Crossover (P→A, B→T)  
C2: Crossover (P→B, A→T)  
T1: Tapping [gauge port] (A, B line)  
T2: Tapping [gauge port] (P, T line)

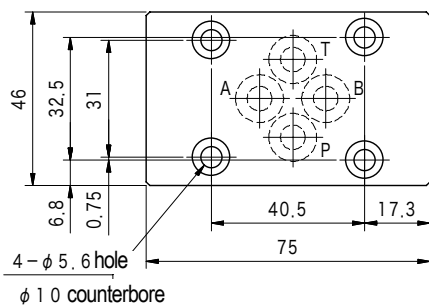
- 5 Design no.
- 6 For T1, T2 only
- 7 For T1, T2 only

## Specifications

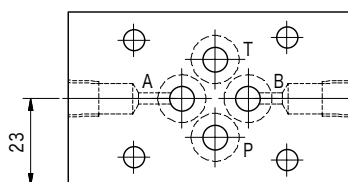
Model	Max. Working Pressure MPa	Weight kg
DGMA-3-B DGMA-3-C1 DGMA-3-C2	25	0.5
DGMA-3-T1 DGMA-3-T2	21	

## Dimensions

DGMA-3-B/C1/C2



DGMA-3-T1



DGMA-3-T2

